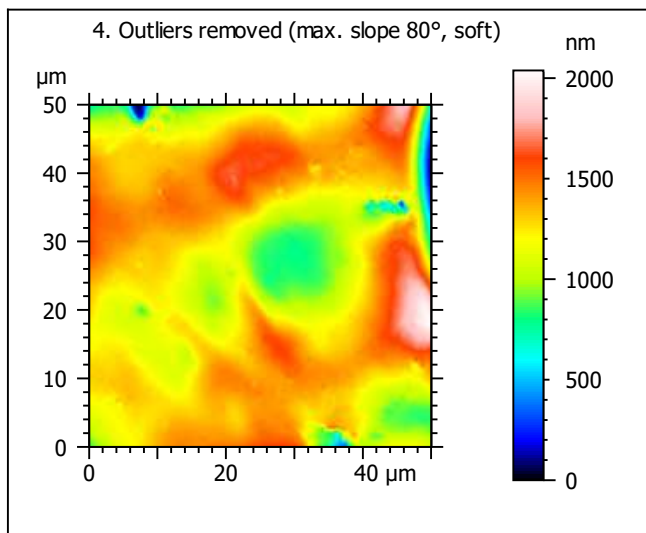
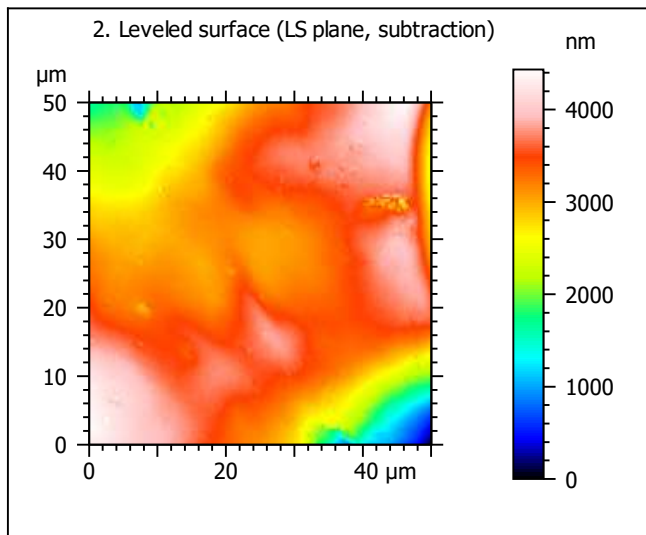
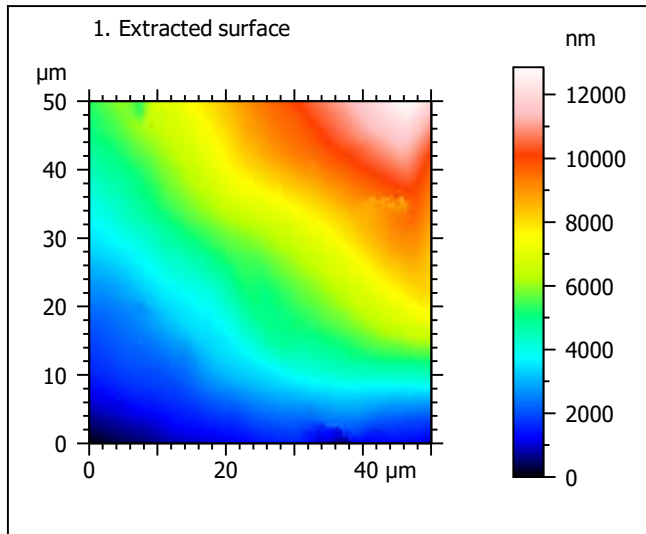
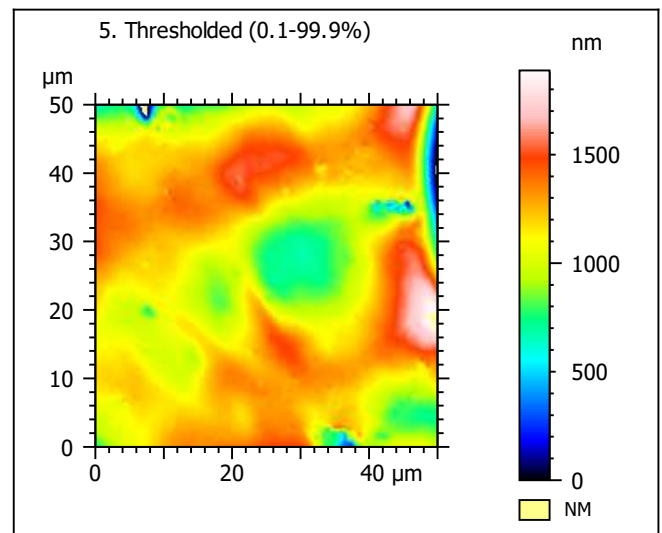
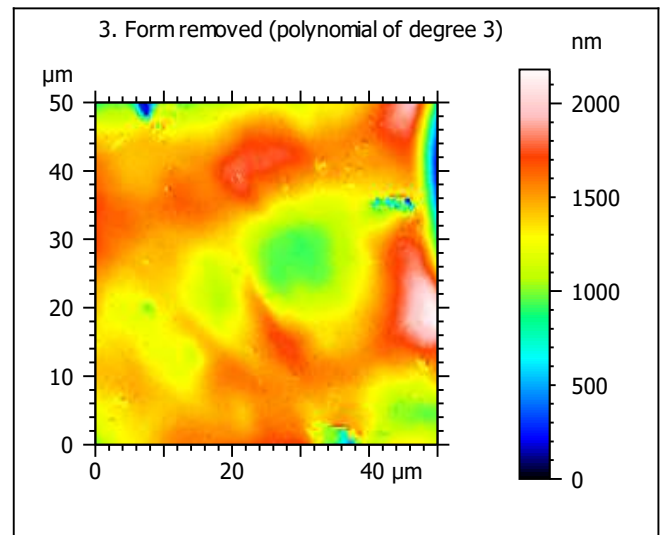


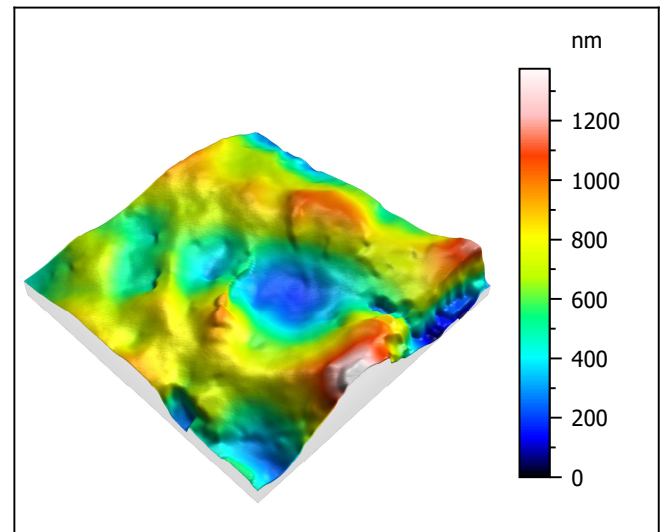
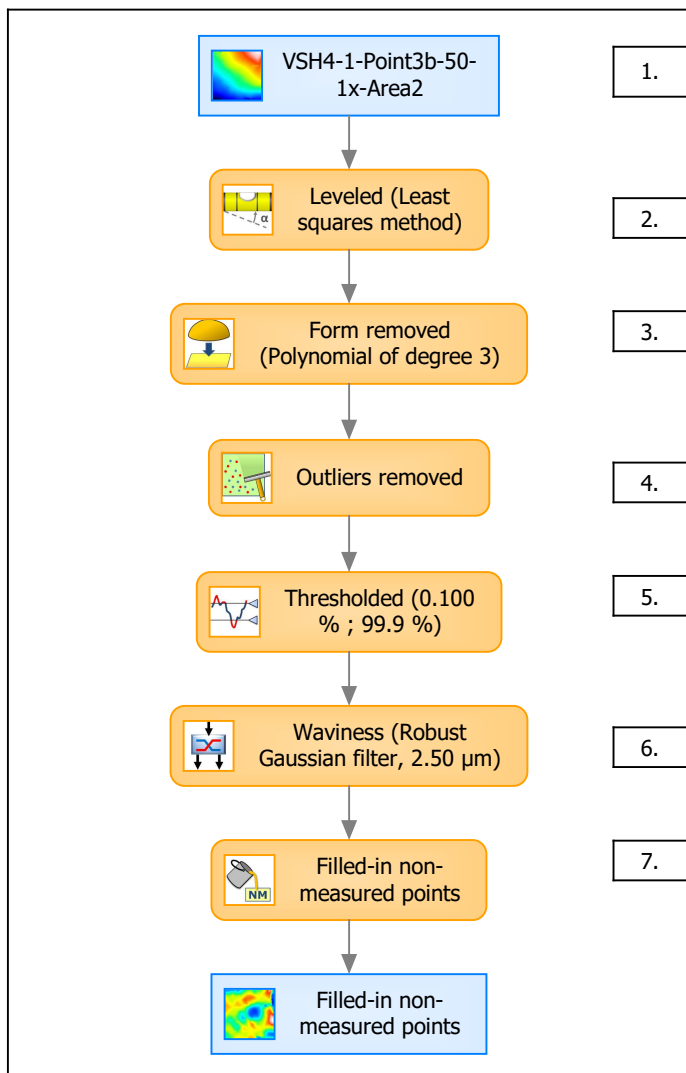
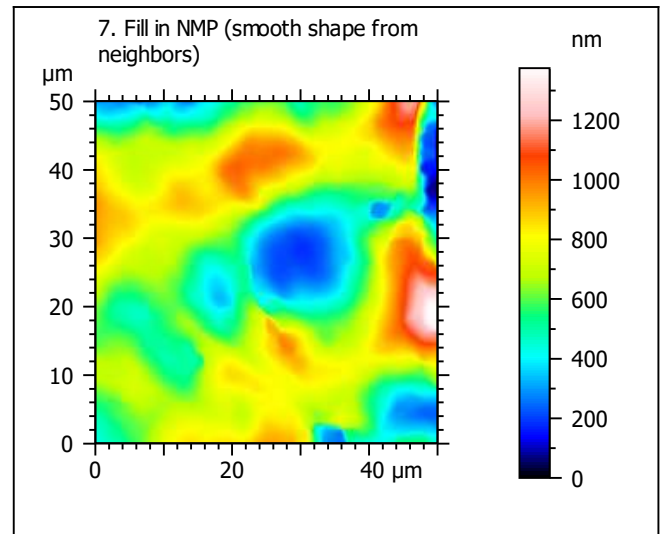
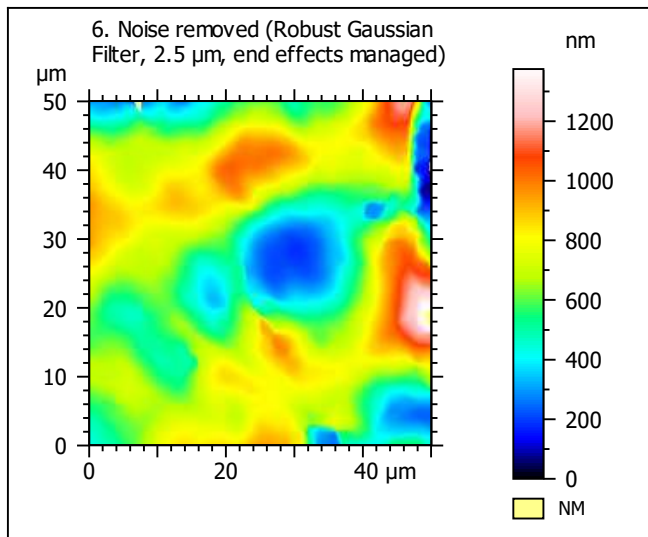
Template to process all extracted 50x50  $\mu\text{m}$  surfaces, acquired with the LEXT 4000 with the 50x/0.95 objective at 1x zoom

## A. Processing



Identity card			
Name:	VSH4-1-Point3b-50-1x-Area2		
File path:	D:\Data\Ant...\VSH4-1-Point3b-50-1x-Area2.sur		
Axis:	X		
Length:	50.0	μm	
Size:	201	points	
Spacing:	0.250	μm	
Axis:	Y		
Length:	50.0	μm	
Size:	201	points	
Spacing:	0.250	μm	
Axis:	Z		
Length:	12858	nm	
Size:	7855	digits	
Spacing:	1.64	nm	
NMP ratio:	0.00 % (0 Pts)		





Identity card			
Name:	VSH4-1-Point3b-50-1x-Area2 > Leveled (Leas...		
<b>Axis:</b>	<b>X</b>		
Length:	50.0	$\mu\text{m}$	
Size:	201	points	
Spacing:	0.250	$\mu\text{m}$	
<b>Axis:</b>	<b>Y</b>		
Length:	50.0	$\mu\text{m}$	
Size:	201	points	
Spacing:	0.250	$\mu\text{m}$	
<b>Axis:</b>	<b>Z</b>		
Length:	1375	nm	
Size:	840	digits	
Spacing:	1.64	nm	
NMP ratio:	0.00 % (0 Pts)		

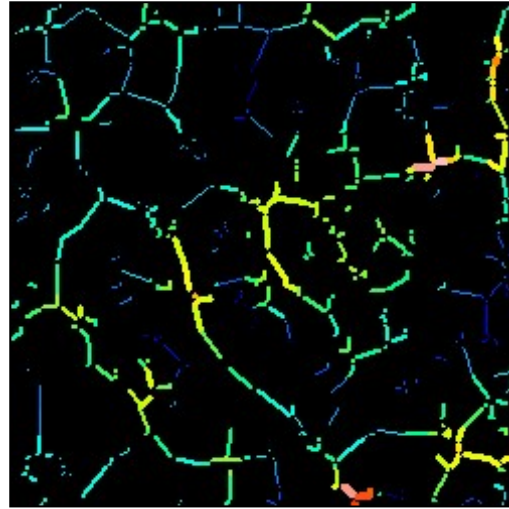
**Analyses:**  
**8. ISO 25178**  
**9. Furrow**  
**10. Texture isotropy and direction**  
**11. SSFA**

## B. Analyses

### 8. ISO 25178-2 parameters on surface #7

ISO 25178		
Height Parameters		
Sq	212	nm
Ssk	-0.0337	
Sku	3.13	
Sp	712	nm
Sv	663	nm
Sz	1375	nm
Sa	168	nm
Functional Parameters		
Smr	89.5	%
Smc	247	nm
Sxp	447	nm
Spatial Parameters		
Sal	6.20	$\mu\text{m}$
Str	0.294	
Std	132	$^{\circ}$
Hybrid Parameters		
Sdq	0.0819	
Sdr	0.325	%
Functional Parameters (Volume)		
Vm	0.0118	$\mu\text{m}^3/\mu\text{m}^2$
Vv	0.258	$\mu\text{m}^3/\mu\text{m}^2$
Vmp	0.0118	$\mu\text{m}^3/\mu\text{m}^2$
Vmc	0.187	$\mu\text{m}^3/\mu\text{m}^2$
Vvc	0.231	$\mu\text{m}^3/\mu\text{m}^2$
Vvv	0.0273	$\mu\text{m}^3/\mu\text{m}^2$

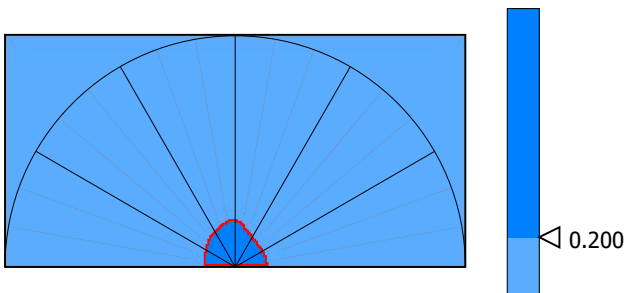
### 9. Furrow analysis surface #7



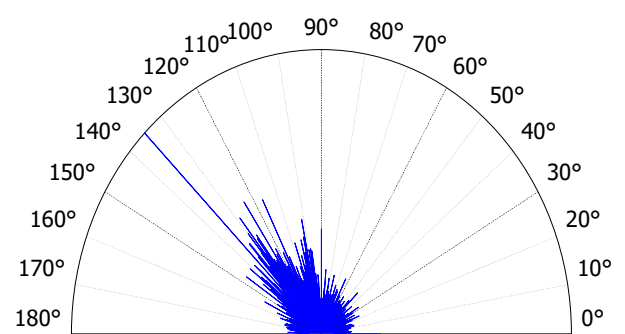
All furrows are shown.

Parameters	Value	Unit
Maximum depth of furrows	374	nm
Mean depth of furrows	138	nm
Mean density of furrows	1787	cm/cm2

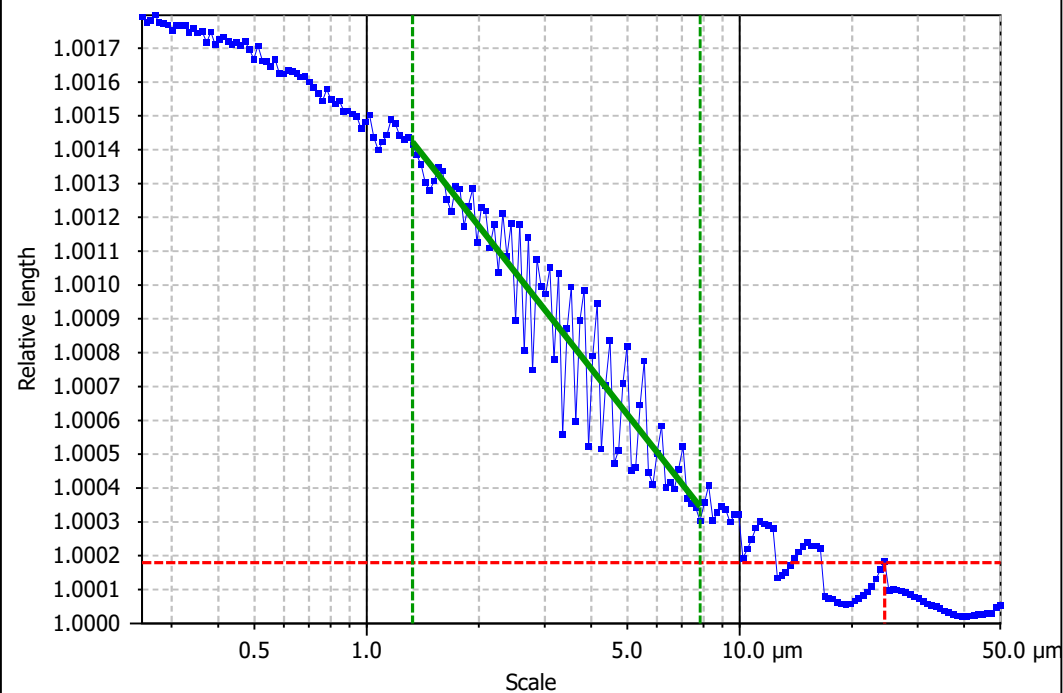
### 10. Texture isotropy and direction on surface #7



Parameters	Value	Unit
Isotropy	62.6	%
Periodicity	*****	%
Period	*****	$\mu\text{m}$
Direction of period	*****	$^{\circ}$

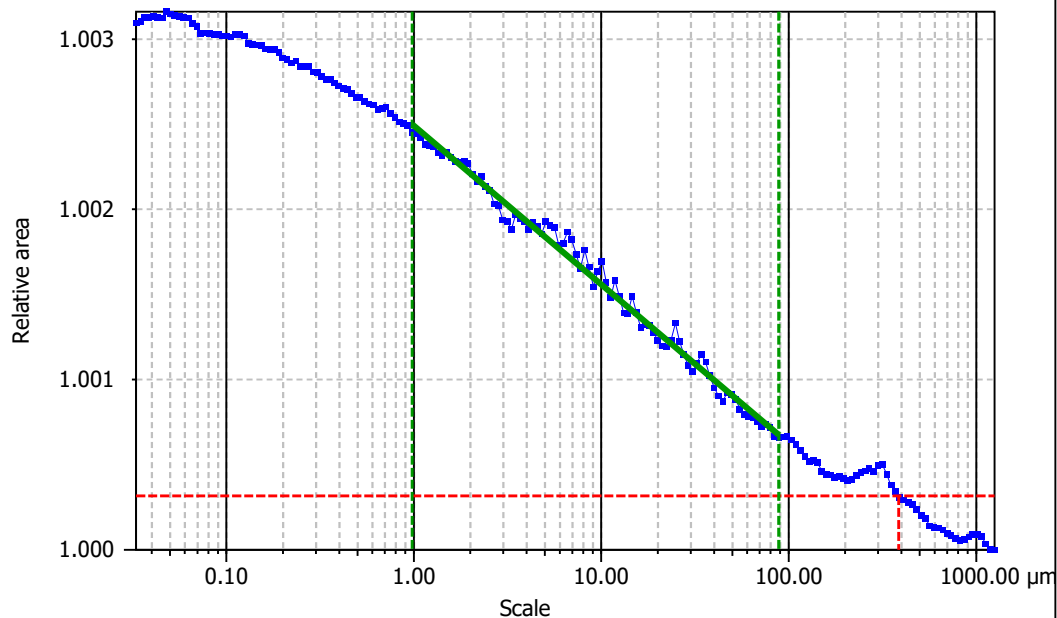


Parameters	Value	Unit
Isotropy	29.4	%
First Direction	135	$^{\circ}$
Second Direction	124	$^{\circ}$
Third Direction	117	$^{\circ}$

**Information**

Method	Length-scale (rows)
--------	---------------------

Parameters	Value	Unit	Comment
epLsar	0.0179		(1.8 $\mu\text{m}$ , 5°)

**Information**

Method	Area-scale (four corners)
--------	---------------------------

Parameters	Value	Unit	Comment
Asfc	0.405		
Smfc	15.4	$\mu\text{m}^2$	
HAsfc9	0.967		(3x3)
HAsfc81	1.37		(9x9)